

# Vettec

ANIMAL HEALTH



# STEP-BY-STEP HANDBOOK 2021



KERCKHAERT  
— ROYAL HORSESHOE FACTORY —

# Table of contents

<b>Introduction</b> .....	<b>3</b>	<b>Equi-Pak   Soft</b> .....	<b>21</b>
<b>How to prepare the cartridge for use</b> .....	<b>4</b>	<b>Application</b> .....	<b>22</b>
<b>Vettec products and description</b> .....	<b>5</b>	<b>Sil-Pak</b> .....	<b>23</b>
<b>Sole-Guard</b> .....	<b>7</b>	<b>Standard Application</b> .....	<b>24</b>
<b>Standard Application</b> .....	<b>8</b>	<b>Super Fast</b> .....	<b>26</b>
<b>Equi-Pak   CS</b> .....	<b>10</b>	<b>Temprary Shoes</b> .....	<b>27</b>
<b>Standard Application</b> .....	<b>11</b>	<b>Changing Heel Angles</b> .....	<b>31</b>
<b>Alternative Application</b> .....	<b>12</b>	<b>Foal Extensions</b> .....	<b>32</b>
<b>Equi-Pak</b> .....	<b>14</b>	<b>Foal Toe Extensions</b> .....	<b>35</b>
<b>Protection and Support</b> .....	<b>15</b>	<b>Adhere</b> .....	<b>36</b>
<b>Standard Application</b> .....	<b>16</b>	<b>Hoof Preparation for Glue On</b> .....	<b>37</b>
<b>Ground Level Application</b> .....	<b>17</b>	<b>Hoof Preparation</b> .....	<b>38</b>
<b>Founder or Laminitic Application</b> ...	<b>18</b>	<b>Shoe Preparation</b> .....	<b>41</b>
<b>Alternative Application</b> .....	<b>19</b>	<b>Material and Shoe Application</b> .....	<b>42</b>
<b>Abscess Application</b> .....	<b>20</b>	<b>Hoof Repair</b> .....	<b>45</b>

# Introduction

## Never underestimate the power of the original

More than 20 years, Vettec offers a professional line of horse hoof care products worldwide. The variety of the Vettec products provides the hoof care professional to complete hoof repairs and glue on shoes the best way possible. All Vettec products have been developed to offer the best care for each individual horse and the ease in use for the hoof care professional. Vettec was the first to develop this hoof related materials and is known to be the A-brand in the market.



## Designed to make a difference

The signature of each Kerckhaert brand is the vision behind the product. A vision based on real passion and product development to really make the difference. To create effective solutions that offer the best help and comfort for each individual horse and his/her farrier. Vettec is a perfect exemple of a Kerckhaert brand. More than 20 years the Vettec products are known to be the absolute A-brand in solving hoof problems and restoring the natural form and function of the equine hoof. The extensive line of hoof related materials allows the professional farrier to create the best solution in each situation.

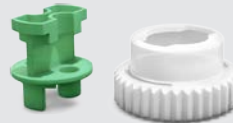
# How to prepare the 210 cc cartridge for use

1



Load cartridge into dispensing gun

Unscrew locking collar and remove green plug, place aside for future use.



2

3

Equalize cartridge

Attach mix tip and screw locking collar back on to secure. (After use, remove locking collar and mix tip. Insert green plug and screw locking collar back in place to preserve remaining material).



4



Note: Utilize 210cc Mix Tips and Dispensing Guns only.



748-0002-081 Diamond 210cc Mix Tips (12pcs)



748-0002-074 Diamond Double Dispenser 210cc

# Vettec products and description



## Sole-Guard

Sole protection & support material

### Overview

- Fast, effective protection & support for the sound footed, unshod horse
- Sets firm to protect, but retains flexibility to move naturally with the foot
- Provides protection & support for the bottom of the hoof in one easy application

### Specifications

- Color: Black
- Set time: 30 sec.
- **Shore:** **65**

210cc cartridge

748-0001-095



## Equi-Pak | CS

Soft & supportive instant pad material for thrush

### Overview

- Effectively deal with most cases of thrush
- Provides durable, shock absorbing support
- Eliminates needs to pick out feet or apply daily medication
- Use as a preventive measure before thrush even begins

### Specifications

- Color: Green
- Set time: 1 min.
- **Shore:** **55**

210cc cartridge

748-0001-092



## Equi-Pak

Soft & supportive instant pad material

### Overview

- Protect, cushion & support
- Great for foundered and laminitic cases
- Bonds to sole & frog
- Apply in thin protective layer or toward ground level for full support
- No pad needed

### Specifications

- Color: Clear
- Set time: 30 sec.
- **Shore:** **55**

210cc cartridge

748-0001-091



## Equi-Pak | SOFT

Extra soft instant pad material for use under pads

### Overview

- Softer pad material
- Can be used on horses with thin soles and deep commissures
- Great for therapeutic cases
- Designed for use under pads

### Specifications

- Color: Clear
- Set time: 40 sec.
- **Shore:** **45**

210cc cartridge

748-0001-093

# Vettec products and description



## Sil-Pak

Fast setting silicone packing material for use under pads

### Overview

- Silicone material for use under pad in order to cushion & protect foot
- Liquid formula fills all void areas minimizing debris migration providing a clean sole & eliminating odors

### Specifications

- Color: Purple
- Set time: 1-2 min.
- Shore: 30

160cc cartridge

748-0001-016



## Super-Fast

Fast setting hoof adhesive for foal extensions & custom shoes

### Overview

- Ideal for foal extensions & making custom shoes
- Great for building heels, correcting heel angles & medial/lateral extensions
- Good for small hoof repairs

### Specifications

- Color: Clear
- Initial set time: 30 sec.
- Weight bearing: 2-3 min.

210cc cartridge

748-0002-076



## Adhere

Glue-on shoe & hoof repair adhesive

### Overview

- For small & large hoof repairs and for gluing on shoes
- Will bond to steel & aluminium
- Excellent for urethane glue-on shoes & boots
- Flexes like hoof wall & can be nailed

### Specifications

- Color: Black
- Initial set time: 1 min.
- Weight bearing: 4-5 min.
- Full cure: 6 min.

210cc cartridge

748-0001-092



## Diamond Dispenser Gun

### Specifications

- Color: Green
- Available in: 160/180 cc  
200/210 cc

## Diamond Mix Tips

### Specifications

- 12 pcs
- Fit 210 cc Vettec cartridges





## Sole-Guard

### Sole protection & support material

**Sole-Guard** is the first product of its kind to offer fast effective protection and support for the unshod foot. Simply fill the bottom of the foot with **Sole-Guard** creating a protective coating that bonds to the foot for up to three weeks. **Sole-Guard** sets firm to protect the unshod foot, yet retains flexibility to move naturally, providing comfort and support, in one easy application.

**Sole-Guard** is excellent for horses that are transitioning away from shoes, brood mares that need the extra support late term and horses that just need extra protection while riding in rough terrain.

## Sole-Guard - Standard Application



**1.** Prepare foot as normal with proper trim and balance. Be sure to have the commissures of the frog clean and remove any sole that is ready to exfoliate.

Then dry thoroughly. Use heat gun or hair dryer.



**2.** With contouring plastic held at the toe, hold hoof up and dispense **Sole Guard** onto the sole using enough material to cover the entire sole to the white line.



**3.** After application, bring plastic back from toe to heel smoothing and pushing material for even fill of sole and frog. Hold foot for 30 seconds. Place foot down on smooth, hard surface.



**4.** Hoof after weight bearing. Note even distribution of material.

**Recommended: Do not turn horse out for minimum of 30 min. after application.**

**NOTE:** For application on softer surface, please refer to application directions.



## Sole-Guard - Standard Application



5. Hoof after final set, removal of plastic and trimmed material at the heels and bulbs.

### Related products



#### Diamond Flex Hoof Wrap

- Self-adhesive, in attractive colors

Blue	747-0001-186
Green	747-0001-187
Red	747-0001-188
White	747-0001-189
Black	747-0001-190



#### Vettec Foampads

- Adhesive pad

748-0001-097



#### Plastic wrap & handle

- Plastic wrap

Wrap	748-0002-082
Handle	748-0002-083



# Equi-Pak | CS

## Soft & Supportive Instant Pad Material for Thrush

Equi-Pak | CS is used for the prevention and management of thrush while providing protection and support to the hoof and the bony column. Equi-Pak | CS seals out moisture and debris preventing a recurrence of thrush conditions and eliminating the need to pick the hoof out daily.

## Equi-Pak I CS - Standard Application



1. Trim and conservatively pare out the sole. With a hoof knife, remove as much of the infected tissue as possible.

**NOTE:** Equi-Pak I CS should not be used on thrush cases where bleeding or white necrotic tissue is present.



2. Dry the sole thoroughly with a heat gun.

**NOTE:** Equi-Pak I CS can be used with or without mesh, but in most cases where the horse is in work the use of Vettec Equi-Mesh is recommended.



3. Dispense Equi-Pak I CS evenly into the sole to the desired height.

**DO NOT** go above the ground level of the shoe.  
**Hold** foot up for 1 to 1 1/2 minutes and set down.

## Equi-Pak | CS - Alternative Application



Use a foam board for older, arthritic horses or when you can't get the foot level. This allows you to keep the foot down low in a very comfortable position for the horse.



Finished application.



**1.** When full support, and traction, are needed in an application, simply use the "double foam board" technique to create an artificial frog.



**2.** To create additional frog support and traction.

## Equi-Pak I CS - Alternative Application



3. Removal of **Equi-Pak I CS** after 6 weeks

### Related products



#### Diamond Mix tips 210cc

- Dispenser tips

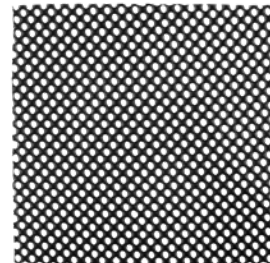
748-0002-081



#### Vettec Foampads

- Adhesive pad

748-0001-097



#### Vettec Equi-Mesh

- 170 x 170 mm

748-0001-098



# Equi-Pak

## Soft & Supportive Instant Pad Material

This revolutionary soft instant pad material is dispensed onto the frog and sole and gels in 30 seconds. **Equi-Pak** sticks directly to the sole and will stay in place throughout the normal shoeing cycle. This material protects, supports, and provides comfort to sore footed horses.



**Equi-Pak** is best applied to a freshly prepared sole and frog. Remove only the sole that is due to exfoliate soon.

**DO NOT** over-prepare the sole. With all applications make sure the sulcus of the frog is clean and void of any debris. Be certain no anaerobic bacteria is present.

## Equi-Pak - Standard Application



1. Place mesh between shoe and hoof.



2. After shoe and mesh are in place;  
dry thoroughly.



3. Immediately dispense onto hoof after drying.  
**DO NOT** give sole time to rehydrate.



4. Fill **Equi-Pak** just to shoe level. Used for cushion and protection. Seat out shoe so material can "lock" underneath the shoe.

**NOTE:** Equi-Mesh is recommended with the **Equi-Pak**, when the horse will be worked or under changing weather conditions (i.e. transitions between wet & dry conditions).



## Equi-Pak - Ground Level Application



**1.** If filling with **Equi-Pak** for full support, use the Adhesive Foam Boards. Place foam board on shoe and let horse bear weight on it for a few seconds to seal it around the shoe.



**2.** Insert tip towards toe and back fill to the bulbs. This will seal out any moisture or debris.



**3.** **Equi-Pak** filled for full support using the Adhesive Foam Boards.

**NOTE:** For egg bar shoes, punch a hole in the foam board near apex of frog and fill.

**NOTE:** If filled to ground level and working on grass use studs or caulks.

Excellent for thin soled horses, horses with low heel angles and those with thin walls. The extra support takes stress off the wall and allows the wall to grow down faster and thicker.

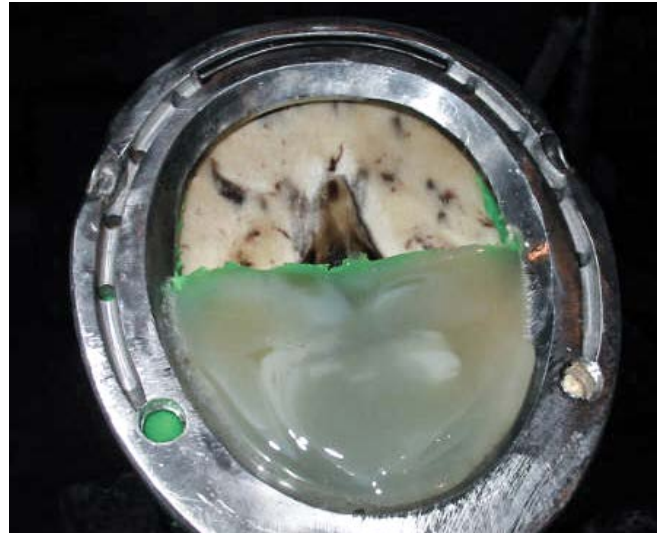
## Equi-Pak - Founder or Laminitic Applications

(Where rotation and thin soles are a concern)



**1.** Block out forward of the apex of the frog with Play Dough, modeling clay, etc.

Apply foam board and fill with **Equi-Pak**.



**2.** After a few minutes remove foam board and putty.

**NOTE:** If on rocky ground, trim foam board to shape and let horse wear it off.



**3.** Provides frog and caudle support. Great when x-rays are not available.

## Equi-Pak - Alternative Applications



**1.** To give a “cup” to the sole, simply use a clear plastic pad. Apply Vaseline® to the hoof side, hold over foot and push in with palm of hand while filling with the **Equi-Pak**.



**2.** At 30 seconds, remove pad and set down foot.

**NOTE:** Technique can also be accomplished with metal shoes.



**3.** Whether using a plastic heartbar support pad or a heartbar shoe, **Equi-Pak** is perfect for sealing out debris around the commissures, frog and back into the heel region.

## Equi-Pak - Abscess Application



1. Cover abscess with Play Dough or molding clay.



2. Fill with **Equi-Pak** then remove plug to allow for medication and drainage.

### Related products



#### Diamond Mix tips 210cc

- Dispenser tips

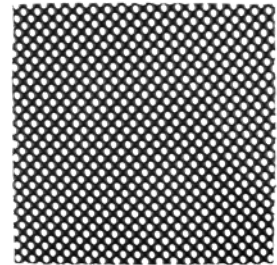
748-0002-081



#### Vettec Foampads

- Adhesive pad

748-0001-097



#### Vettec Equi-Mesh

- 170 x 170 mm

748-0001-098



## Equi-Pak | Soft

### Extra Soft Instant Pad Material for Use Under Pads

**Equi-Pak | Soft** is nearly two times softer than regular Equi-Pak and has a 40 second set time. This soft(er) pad material can be used on horses with thin soles and deep commissures and will work great for therapeutic cases and other sensitive situations. **Equi-Pak | Soft** remains soft once set, even in cold temperatures, yet is durable with a strong bond to the sole.

## Equi-Pak | Soft - Applications



**Equi-Pak | Soft** can be filled to ground level without a pad on therapeutic cases where the horse is stalled and not working.



On a working horse, **Equi-Pak | Soft** will be filled to ground level under a pad. The material adheres to the sole locking out sand, moisture and debris. **Equi-Pak | Soft** will leave the sole in excellent condition, eliminating cheesy sole.



**Equi-Pak | Soft** can be filled to ground level without a pad on therapeutic cases where the horse is stalled and not working.

**Equi-Pak | Soft** should be used with a pad on working horses and adheres to the sole sealing out moisture and debris, protecting both the frog and sole. **Equi-Pak | Soft** can be filled to ground level for lameness cases. **Equi-Pak | Soft** will leave the sole in excellent condition, eliminating cheesy sole.



## Sil-Pak

### Fast Setting Liquid Silicone Packing Material

Vettec's unique liquid silicone packing material flows under the pad and into every crevice for superior cushion and retention. **Sil-Pak**'s medical grade quality ensures a clean sole upon removal (no more cheesy sole). **Sil-Pak** has a one minute set time, fills all voids and retains its shape under the pad.

## Sil-Pak - Standard Applications



**1.** Trim and balance foot as needed. Trim frog and commissures of all debris.



**2.** Dry sole and frog if excessive moisture is present.



**3.** Once shoe and pad are on, fill foot with **Sil-Pak** to the heel of the shoe to ensure a good seal.



## Sil-Pak - Standard Application



**Sil-Pak** is designed for sound horses that need a bit more protection due to thin soles or rough terrain. If your horse has a support issue we suggest applying the **Equi-Pak**, **Equi-Pak I CS** or **Equi-Build** for superior support and protection.

### Related products



#### Diamond Mix tips 210cc

- Dispenser tips

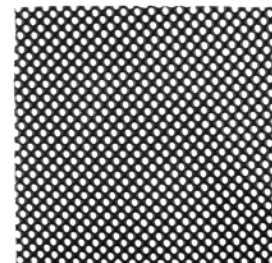
748-0002-081



#### Vettec Foampads

- Adhesive pad

748-0001-097



#### Vettec Equi-Mesh

- 170 x 170 mm

748-0001-098



# Super Fast

## Adhesive

This 30 second set hoof adhesive can be used for small repairs, leveling feet, building heel angles, making custom shoes and foal extensions.

## Super Fast - Temporary Shoes



**Super Fast** offers the farrier, veterinarian and owner the option of providing hoof protection when wall condition doesn't allow for nailing on traditional shoes. **Super Fast** temporary shoes, along with **Equi-Pak** or **Equi-Build**, provide custom support in founder or other lameness cases when nailing might be too painful and at the same time offering you the option of changing heel angle or creating medial or lateral support.

**Super Fast** Temporary shoes can also be used for casual trail riding or training.



**Super Fast** Temporary Shoes give horses with weak, brittle walls a break from nailed on shoes.

Apply **Super Fast** to the hoof to provide medial or lateral support, as well as to the heels to change the angle.

## Super Fast - Temporary Shoes



Foot prep is key to success here.

**1.** Remove all loose, flaky sole and wall. Any separation at the white line must also be removed.



**2.** No matter what part of the country you're in or the condition of the hoof, DRY IT! There's moisture present and moisture will prevent **Super Fast** from sticking to the hoof.



**3.** Start at one heel and run a bead around the entire ground surface of the hoof. If you have a low spot, you can come back and add before you set the foot down or later on.



**4.** After applying, hold the hoof up for 2 1/2 minutes. Start timing after the material has reached the second heel (not at the start of application).

## Super Fast - Temporary Shoes



**5.** After 2 1/2 minutes try to move the material at the heels and if the bulbs move instead, the material has cured & the foot can be put down.

**6.** After application and final set, rasp to shape and balance.



**NOTE:** If the horse will be ridden, it is advisable to add a layer onto the outer wall. This layer bonds the ground layer to the outer wall providing stability.

## Super Fast - Temporary Shoes



This technique is also good for leveling a hoof or adjusting medial or lateral balance.

**NOTE:** In extreme cold weather, use a heat gun to speed up the cure time. Warming the cartridge and the hoof, should eliminate the need to heat during curing.

“As a farrier specializing in shoeing foundered horse with rigid heartbar shoes (about 60-85 new cases a year), there are many times that a shim is needed on the frog plate of the heartbar shoe. In about one-half of these cases, I will use Vettec Super Fast as my frog plate shim. All that is needed is to drill a couple of holes in the frog plate in order to help lock the Super Fast to the shoe and apply the Super Fast to the frog plate. In just a quick minute, the Super Fast is dry and ready to be worked with. If adjustments are needed to the shim, the Super Fast shim is easily rasped or ground down to fit. I’ve utilized Super Fast as a frog plate shim for many years and have noted no ill effects to the horses’ frogs, both with foundered horses and other horses requiring a little extra support via the heartbar shoe. In my opinion, there is no better product to fit this need than Vettec’s Super Fast.”

Esco Buff, PhD, AFA-CF

Esco Buff’s Farrier and Founder Support Service

Webster, New York

## Super Fast - Changing Heel Angles

This can be done whether the horse will have shoes on or not. In this case the horse will not wear shoes so we build a shoe out of the **Super Fast** first. Foot prep remains the same. Trim the hoof, remove all weak, flaky structure, then dry.



1. Apply material and hold for 2 1/2 minutes.



2. After initial base is put on, apply material to the heel area to desired height.

Hold foot up for 2 1/2 minutes.



3. Rasp to desired angle and shape.



## Super Fast - Foal Extensions

(Lateral extension on "windswept" foal)



### 1. Trim the hoof.

Any bacteria around the white line is also removed. You do not want to trap any bacteria and it is a weak spot to adhere to.

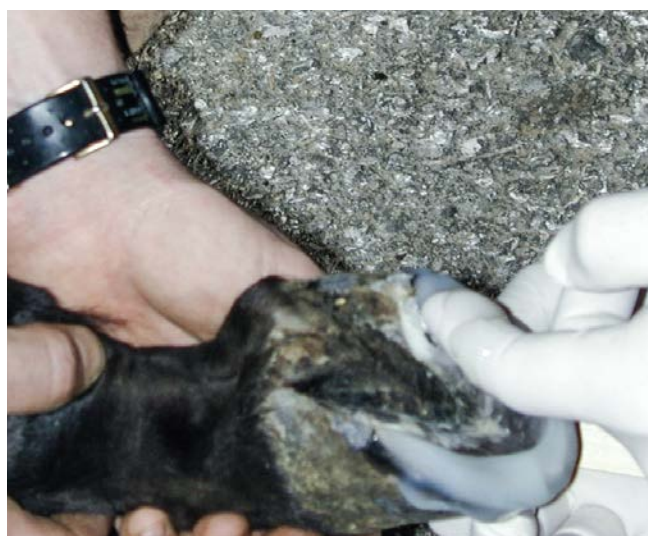


### 2. DRY, DRY, DRY

**NOTE:** That sole is pared out, and all loose structure is being removed. **DO NOT over-pare the sole.**



**3.** Apply ground layer of **Super Fast** first. For foals 0-30 days old, do not go heel to heel with the material. Hold foot up for about 2 minutes. Apply second layer if needed.



**4.** Be careful not to come too far onto sole with the **Super Fast**. Use a gloved finger to remove any excess or rasp or hoof knife if material is set.



## Super Fast - Foal Extensions



5. After ground layer is set, rasp level and check for proper balance.



6. To apply the lateral extension, stand foal on plastic, foam board or paper. Apply **Super Fast** outward and up onto the wall to achieve desired support.

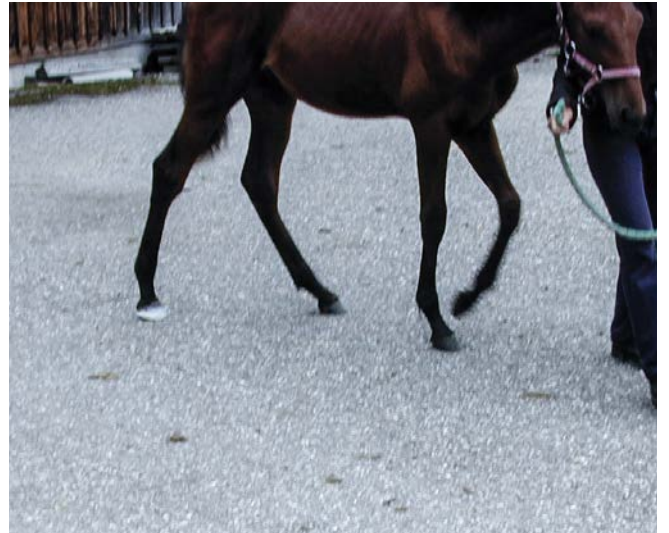


7. Apply layers as needed. **DO NOT** apply too thick at once as heat on foals may be too much.



8. Solar view of ground layer and 3 lateral layers applied.

## Super Fast - Foal Extensions



**9. Finished Product:** Foal was turned out 24/7 in mountain pasture with mare. Stayed on 7 weeks.

**NOTE:** Monitor and adjust as needed.

## Super Fast - Foal Toe Extensions



Foot prep the same as for lateral extension.

1. Apply ground layer first.
2. Add **Super Fast** to toe to desired length.

Rasp toe extension back until heel comes off the ground. If the heel touches the ground you might have too much leverage at the toe.

### Related products



#### Redwing Working gloves

- Gloves suitable for all light & medium works. Available in 4 sizes.

Size 7	734-0002-115
Size 8	734-0002-116
Size 9	734-0002-117
Size 10	734-0002-118



#### 3M handwipes

- Pre-impregnated hand wipes

734-0002-129



#### 3M Original Duct Tape

- 50 mm x 50 mm

748-0001-080



## Adhere

### Adhesive

This hoof adhesive is used for hoof wall repairs, building heel angles, and gluing on steel, aluminum, and polyurethane shoes. Adhere provides ample working time but is weight bearing in just four to five minutes.

**NOTE:** When nailing use **Adhere** vs. **Super Fast**.

## Adhere - Hoof Preparation for Glue On



**Adhere** is a fast setting urethane adhesive which provides a superior bond to steel, aluminum, and urethane synthetic shoes.

As with all glue on procedures, **foot and shoe prep are vital.**

**Adhere** provides a great alternative when poor wall condition or lameness prevents nailing.

## Adhere - Hoof Preparation

Adhere



1. Remove anything loose, flaky, shelly or diseased.

For maximum results avoid bonding to loose or flaky hoof wall. It is important to bond to the strongest parts of the hoof.

## Adhere - Hoof Preparation



**NOTE:** The arrows above. Generally when gluing on, areas of separation exist around the white line. This loose, flaky area must be removed as it will compromise the adhesive bond and may contain anaerobic bacteria (which should not be covered).

The area around the bars should also be removed down to good solid structure.



**NOTE:** The loose flaky areas have been relieved and only solid hoof structure remains. Once the area around the bars is cleaned, this hoof is ready to be dried and the shoe applied.



**Reminder:** Adhering to good, solid hoof structure is optimum.

## Adhere - Hoof Preparation



### 2. DRY, DRY, DRY

Drying the hoof is essential. Whether you're in the Northeast or the desert Southwest, that hoof retains moisture. As soon as you start trimming the hoof and cutting the horn tubules, you're releasing moisture. **Dry it!**

Left alone too long the hoof will rehydrate itself and too much moisture will be present. This can happen in as little as one minute.

**Apply Adhere as soon as you're done trying. This means having the cartridge, the gun and shoe ready.**



## Adhere - Shoe Preparation



Shoe prep is as vital as hoof prep.

**1.** Both steel and aluminum **shoes should be ground** to reveal fresh, new metal. All oxidation should be removed.

**Use clips**, this handles the shear factor.

**Enlarge nail holes**, drill at heels if gluing there. Provide as much mechanical hold as possible.

**The clips should be set** to the hoof before gluing. **Adhere** should not be between the clip and the hoof wall.

**Vettec Adhesive Spacers** provide an even thickness of adhesive around the entire shoe, which is critical.



Spacers (in both photos above) provide 3 mm in. Thickness



## Adhere - Material and Shoe Application



**2.** Dispense **Adhere** onto the shoe as quickly as possible to a depth of about 16 mm to 19 mm. This is not the time to be neat. Therefore; use gloves.



**3.** Set shoe to hoof until clips stop, then push down until the spacers hit the hoof. At this point the shoe should not move. With a finger, start at one heel and smooth the material on the sole to the next heel perpendicular to the shoe, don't feather the material.

**NOTE:** **Adhere** coming through the enlarged nail holes. Hold for 4 to 5 minutes. Set down.

**NOTE:** Side to side shear forces are the enemy- if you can get one nail on each side, do it.



**4.** If you don't think the horse will give you 4 to 5 minutes, wrapping hoof in pallet wrap is suggested. This ensures no slippage.

## Adhere - Material and Shoe Application



(Left picture) Extra material at heels is added to prevent movement.

If choosing to leave heels “free”, place tape on shoe at heel but still put adhesive on shoe in that area. This will allow the material to stick to the hoof but not the shoe providing a level surface.

**NOTE:** Picture on left has material smoothed on solar surface. **DO NOT** use this technique. Picture on right has material that has not been feathered. This will provide more strength.



For working horses, apply extra material up onto the hoof wall and heels for extra support.

## Adhere - Material and Shoe Application



In any type of glue on procedure, getting one nail on each side will greatly increase the life of the glue on shoe. Remember **Adhere** rasps, nails and clinches just like natural hoofwall.

**NOTE:** Material on outer wall is not rasped thin. Leave 3 mm ledge of thickness.

Dear Vettec,

"I've used Vettec's Adhere product for gluing shoes on for years with great success, not only because it's easy, no mixing, and no fumes but because they last. I do a variety of performance horses that put a lot of stress on those shoes and they always make the shoeing cycle. One thing I do to ensure long term wear is adding material on the outer wall from the quarters to the heel to help with wall movement. This helps keep the wall steady and makes the job last."

Bobby Menker, CJF

## Adhere - Hoof Repair



**Adhere** is the clear choice for:

- Filling cosmetic chips and cracks
- Building hoofwall for support
- Rebuilding hoofwall in areas to be nailed

The benefits of **Adhere** are:

- **No fumes or odors**
- **Fast Setting**
- **Handles like hoof for nailing, rasping, and nipping.**
- **Available in Black**



**1. Prepare Hoof** - Use a knife, nippers, rasp, or Dremel® tool to remove all weak or flaky hoof wall.

**NOTE: DO NOT REPAIR** over areas of wetness and / or bleeding. If these conditions are present, carry out medical therapy for 7 to 10 days prior to repair procedures.

If hoof has been treated with oily treatments or ointments, use a clean towel dampened with Denatured Alcohol. Use it sparingly as any solvent can leave a film if over applied. **NEVER USE ACETONE.**

## Adhere - Hoof Repair



**NOTE:** All weak and flaky hoof wall has been removed. Creating undercuts and mechanical locks may extend the life of the repair. Outer periople layer of hoof wall should be rasped lightly to remove dirt and ensure solid bond to “new” hoof structure.



**NOTE:** Repairs can be done with or without a shoe in place. If repairing after the shoe is tacked on, avoid bonding to both hoof and shoe by placing a piece of duct tape on the foot side of the shoe.

**2. Dry the Hoof** - dry the prepared area with a heat gun for 40-60 seconds. Even in dry climates, moisture is released when any hoof structure is removed.

**NOTE:** If a Dremel tool or sanding block was used during prep, or in dusty conditions, wipe the dust away with a clean, damp cloth, then dry the area.

## Adhere - Hoof Repair



**3. First Layer** - Immediately after drying, place mix tip against prepared area and dispense a 3 to 6 mm layer using small circular motions. Adhere will set hard to the touch in 45-60 seconds. Final cure is approximately 6-8 minutes.

**4. Second Layer** - Use a clean wire brush to remove gloss on first layer and dry repair area again. Apply second layer to overfill beyond prepped area.

**NOTE: DO NOT** “play” with the material, mold, or “feather” it. A minimum thickness of 3 mm is required for best strength, and faster set.



## Adhere - Hoof Repair



**5. Rasp to Dress** - Once heat has dissipated from **Adhere**, it can be rasped and shaped. For show ring, material can be rasped thin, though best results and longevity are obtained when material is left at least 3 mm thick.



**6. After finishing, nail and clinch.** **Adhere** takes a nail and clinches similar to natural hoof wall. If clinching near the border of a repair, hammer clinch to avoid putting stress on repair material at its border.





**NOTE:** **Adhere** bonds to itself; additional layers can be added after the material is fully cured (6-8 minutes).

## Related products



### Iron Block yellow shoe

- Available in different sizes.

0Front	745-0001-070
0Hind	745-0001-071
1Front	745-0001-072
1Hind	745-0001-073
2Front	745-0001-074
2Hind	745-0001-075
2x0Front	745-0001-069
3Front	745-0001-076



### Adhesive Spacers

- Bag of 50 pcs.

748-0002-039



### Plastic wrap & handle

- Plastic wrap

Wrap	748-0002-082
Handle	748-0002-083

# MORE VALUE FOR YOUR MONEY. 30% MORE.

The new VETTEC 210cc cartridge comes in an industry standard cartridge and holds 30% more material than prior models, giving you more material for your money.

## Features

- Larger dispensing ports
- Locking collar holding tip in place
- After use airtight capping mechanism
- Durable tube design
- 210cc volume

## Benefits

- No cutting tips or clogged ports
- Collar locks tip in place and prevents back flow
- Airtight cap extends into tube and ensures equal flow of both parts
- Tube design and larger openings prevent back pressure that can break seams
- More volume per tube

